

# BLOOD GLUCOSE MONITORING SYSTEM

## QUICK REFERENCE GUIDE

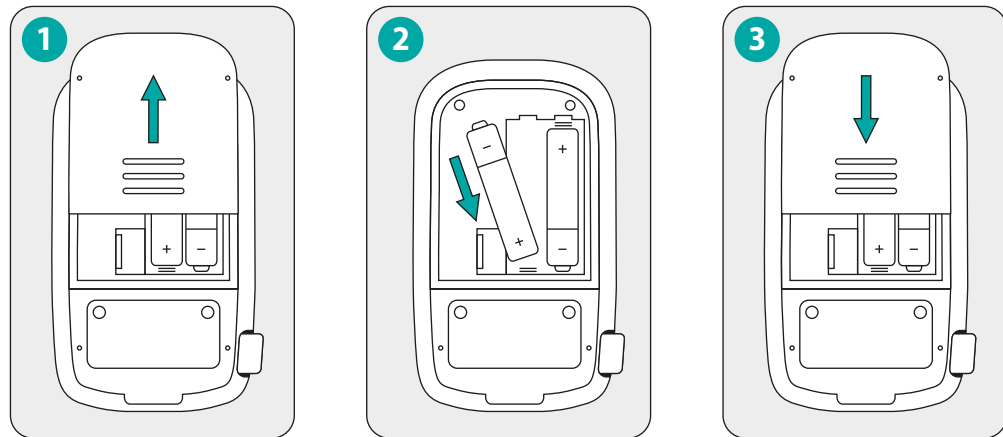


This quick instruction for use will help you to set up and prepare your glucose meter for performing a test. For detailed information, see the Instructions for use included to the set ABRA SMART BT.

### 1. GLUCOSE METER DESCRIPTION

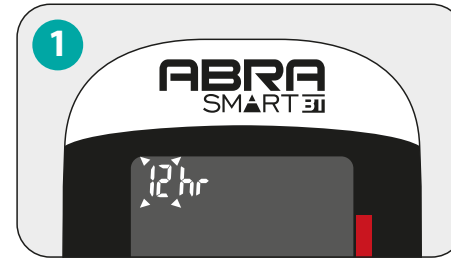


### 2. INSERTING AND REPLACING THE BATTERIES

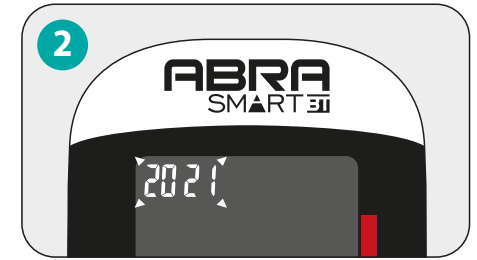


Slide forward battery cover. Place the batteries, remember about the correct polarity + -. Slide battery cover back.

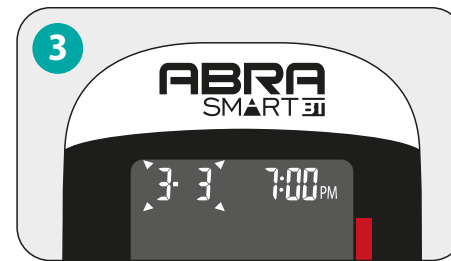
### 3. SETTING THE DATE AND TIME



When the unit is turned off press and hold ⏻ button for 4 sec. Press ▲ or ▼, to select the time format. Press ⏻, to confirm the settings.



Use ▲ and ▼ buttons to set the year. Press ⏻, to confirm the settings.

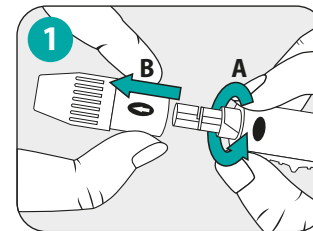


Use ▲ and ▼ buttons to set the date and month. Press ⏻ to confirm the settings.

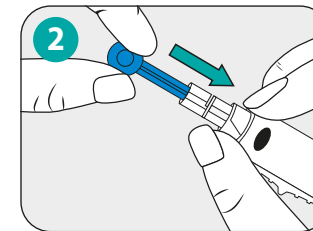


Use ▲ and ▼ buttons to set the hours and minutes. Press ⏻, to confirm the settings.

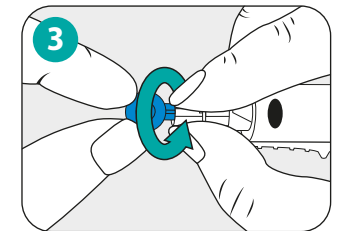
### 4. PREPARING THE LANCING DEVICE



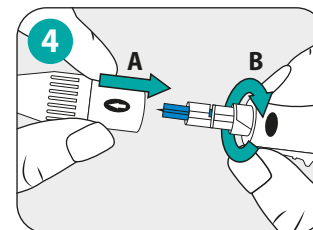
Twist and remove the cap from the lancing device.



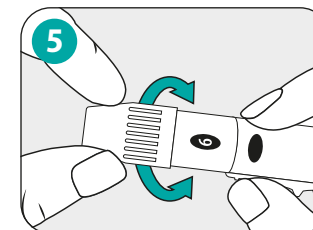
Insert the lancet into the lancet holder.



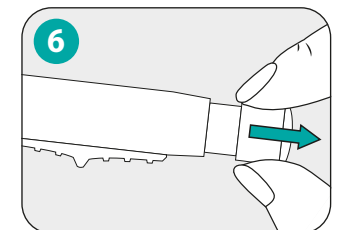
Twist and remove the lancet cap.



Put and tighten the cap back into the lancing device.

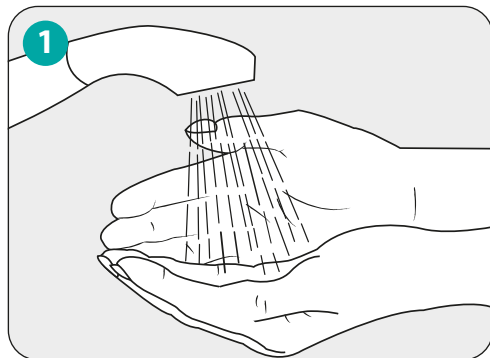


Set the puncture depth by turning the end of the rotating knob.

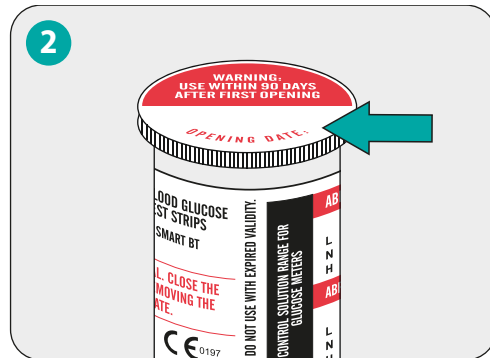


Pull back the pull button till the end, then release.

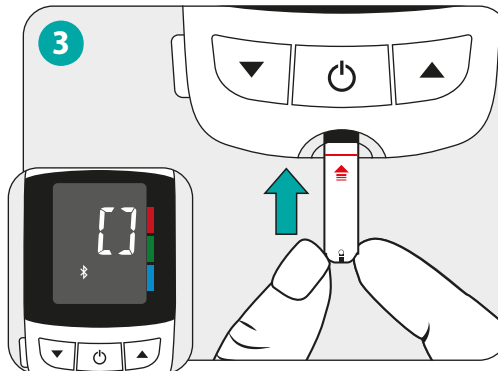
## 5. PERFORMING A TEST



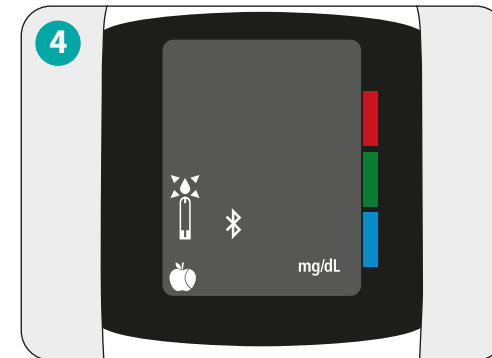
Before performing the test, wash your hands thoroughly and dry them.



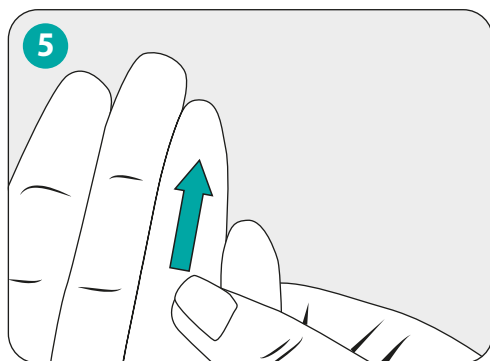
Put down the date when the vial has been firstly opened. Remove the strip from vial and tightly seal the cap. Put down the date of the first vial opening.



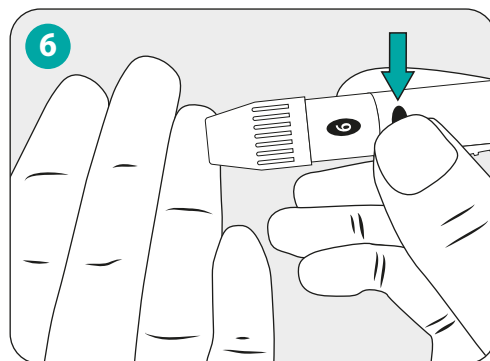
Insert a test strip into the glucose meter. You will hear the beep sound and moving lines will appear on the screen.



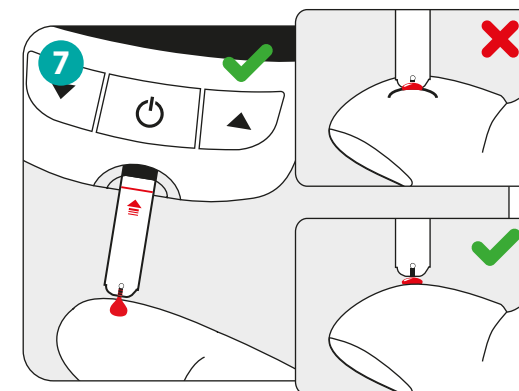
A flashing 🍏 means that the device is ready to take a blood sample. Use ▲ and ▼, to mark a test as pre-meal 🍏 or post-meal 🍏.



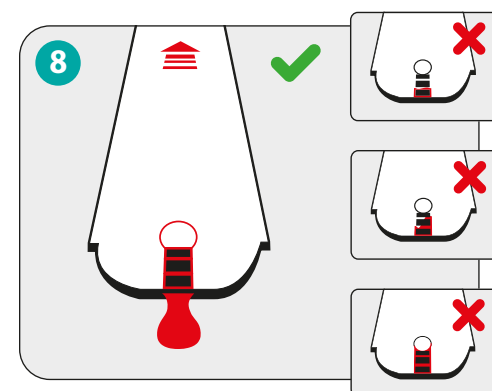
Massage vigorously the place of blood sampling.



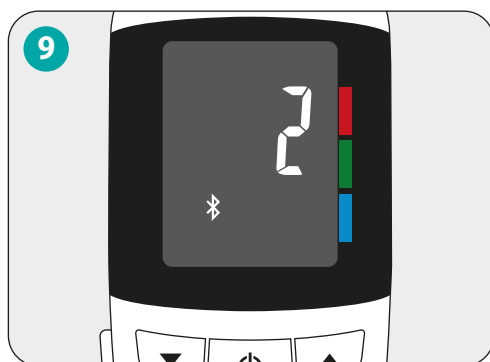
Apply the lancing device to the fingertip and press the release button. Click sound means that the puncture has been performed.



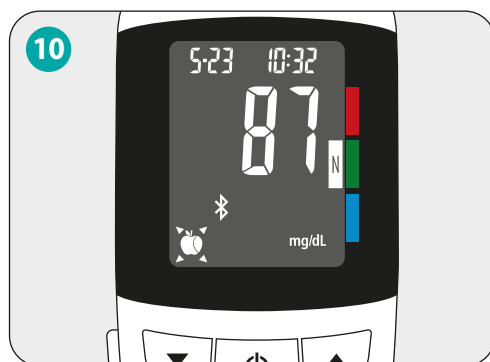
Apply the glucose meter with a strip to a drop of blood. Blood will be automatically sucked into the test strip.



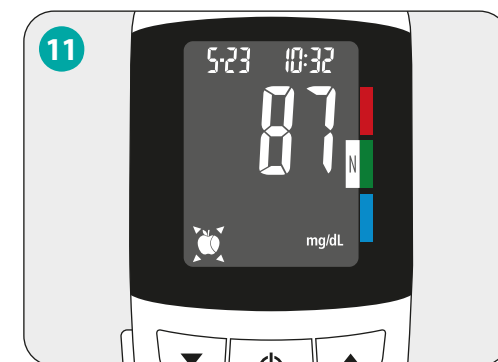
Make sure that the confirmation window is completely filled with blood.



As soon as the confirmation window will be filled with blood, the glucose meter will start counting down from 5 to 1



If you have not previously marked a measurement (Step 4), you can do it now. The apple sign will flash to remind you about it.



Select the ▲ or ▼, to mark the measurement as before 🍏 or after meal 🍏. Confirm your choice with the ⏻ button.